



403-580-8288
SouthernAlbertaMedical.ca

#4 Strachan Ct SE, Medicine Hat, AB
Fax: 403-580-8233

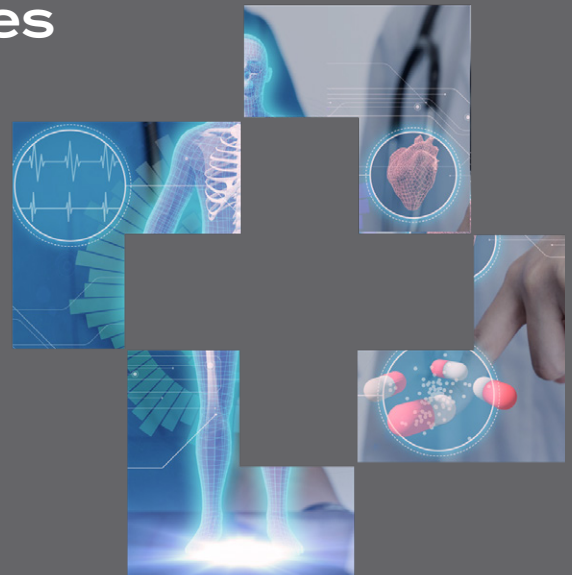
Preventative Care For All Ages

Serving southeastern Alberta & southwestern Saskatchewan

About Us

We Care about our patients and our community. We are the only clinic providing integrated medical specialty consultation, diagnostic services, and rehabilitation to the region. As an integrated group practice, we provide comprehensive care for:

- ➔ CARDIOLOGY
- ➔ GASTROENTEROLOGY
- ➔ GENERAL INTERNAL MEDICINE
- ➔ RESPIROLOGY



Our Clinic

Our 15,000 square-foot state-of-the-art facility has been designed to put your needs first. We are proud to offer:

- ➔ CLINIC EXAMINATION ROOMS
- ➔ DIAGNOSTIC LAB
- ➔ COMPREHENSIVE REHABILITATION GYM

Our Advantage

- ➔ Shorter Waitlists
- ➔ Local Specialists
No traveling to larger centers for treatment
- ➔ We emphasize your unique health and wellness needs
- ➔ **Tests & services covered by Alberta Health**
(Patients need a referral from their family doctor. Walk-in service not available.)



Cardiac Stress Testing

A stress test, shows how your heart functions during physical activity. This test can reveal problems with blood flow within your heart.

During the test your heart rhythm, blood pressure and breathing are monitored. Or you'll receive a drug that mimics the effects of exercise.

Your doctor may recommend a test with imaging, such as a nuclear stress test (MPI) or echocardiographic stress test, if an exercise stress test doesn't pinpoint the cause of your symptoms.

Myocardial Perfusion Imaging Test

Myocardial perfusion imaging (MPI) is a non-invasive imaging test that shows how well blood flows through (perfuses) your heart muscle. It can show areas of the heart muscle that aren't getting enough blood flow. This test is often called a nuclear stress test. It can also show how well the heart muscle is pumping.

MPI & CARDIAC STRESS TESTS CAN HELP YOUR DOCTOR:

- Find out if there are narrowing or blockages in your coronary (heart) arteries if you have chest discomfort
- If you have heart damage from a heart attack if your heart is not working normally
- Determine if you should undergo a coronary angiogram
- Decide whether you would benefit from coronary stent or bypass surgery to treat your chest discomfort or help an abnormal pumping function go back to normal
- If a heart procedure you had to improve blood flow (stent, bypass) is working
- How well your heart can handle physical activity

Echocardiogram (ultrasound of the heart)

An echocardiogram is a test that uses ultrasound to show how your heart muscle and valves are working. The sound waves make moving pictures of your heart so your doctor can get a good look at its size and shape.

ECHOCARDIOGRAM CAN HELP YOUR DOCTOR:

- Look for heart disease
- Monitor heart valve disease over time
- See how well medical or surgical treatments are working

Blood Pressure & Holter Monitoring

A Holter monitor is a small, wearable device that keeps track of your heart rhythm; recording all of your heartbeats.

A Holter monitor test is usually performed after a traditional test to check your heart rhythm (electrocardiogram), especially if the electrocardiogram doesn't give your doctor enough information about your heart's condition.



Bone Mineral Density

A bone mineral density (BMD) test measures how much calcium and other types of minerals are in an area of your bone. The scan uses a dual-energy x-ray absorptiometry (DEXA). DEXA uses low-dose x-ray imaging.

BMD TESTS CAN HELP YOUR DOCTOR:

- Detect Osteoporosis
- Predict your risk for bone fractures